

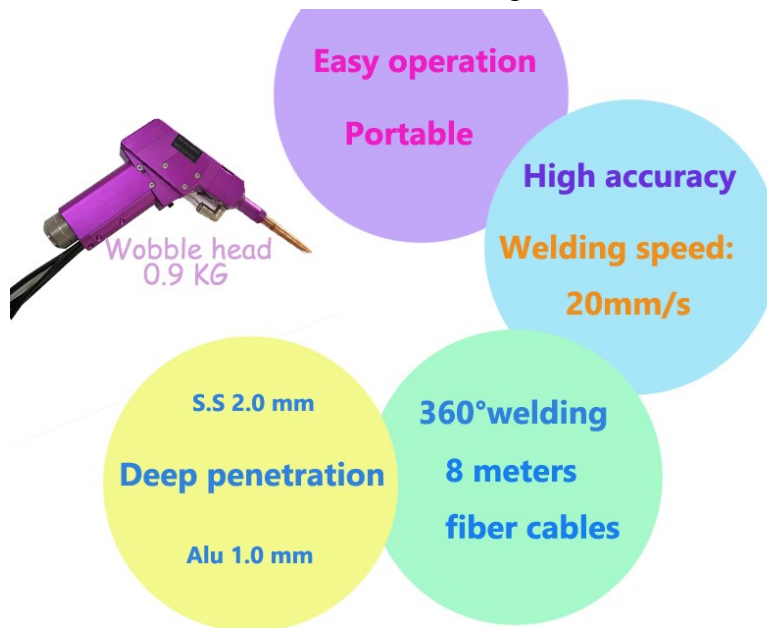
1000W, 1500W, 2000W Handheld Laser Welding Machine



The laser optical cable length:8 meters

Handheld Laser Machine Advantages

- 1.Portable,easy operation. No need having experience worker.
- 2.High accuracy, the welding spot diameter can be 0.3mm-2mm ;
- 3.Weld penetration can be 2mm , more stable than traditional YAG laser welder;
- 4.Handheld welding, laser head can turn around 360 degrees.



Technical specifications

Model/Power	1000W	1500W	2000W
Max energy of single pulse	100J	110J	120J
Laser Type	CW Continuous Laser		
Model	HW-MY-H1000		
Laser wavelength	1064nm		
Laser welding frequency	1000HZ		
Laser spot diameter	0.4-2 mm		
Weld penetration	0.1~3mm		
Power can be adjustable	5%~100%		
Pulse width	1ms		
Power Supply	220V±10%/50-60HZ	220V±10%/50-60HZ	380V±10%/50-60HZ
Power Consumption	2.5KW	3KW	5KW
Cooling water flow	15L/min		
Weight	210KG	230KG	280KG
Cooling Way	Water cooling		
Chiller's water	Deionized water		
Protective gas	Nitrogen gas		
Protective gas pressure	12~14 MPa		

Which power machine you should choose:

1000W power Handheld welding system					
Materials	Stainless steel	Carbon steel	Aluminium	Brass	Red copper
Thickness-mm					
0.5	Weld OK	Weld OK			
0.8	Weld OK	Weld OK			
1	Weld OK	Weld OK			
1.5	Weld OK	Weld OK			
2	Weld OK	Weld OK			
2.5	Weld OK	Weld OK			
3		Weld OK			

1500W					
Materials	Stainless steel	Carbon steel	Aluminium	Brass	Red copper
Thickness-mm					
0.5	Weld OK	Weld OK	Weld OK	Weld OK	Weld OK
0.8	Weld OK	Weld OK	Weld OK	Weld OK	Weld OK
1	Weld OK	Weld OK	Weld OK	Weld OK	
1.5	Weld OK	Weld OK	Weld OK	Weld OK	
2	Weld OK	Weld OK	Weld OK	Weld OK	
2.5	Weld OK	Weld OK	Weld OK		
3	Weld OK	Weld OK	Weld OK		
3.5	Weld OK	Weld OK			
4		Weld OK			

Main parts:

Main parts:	Brand Details:
Laser source	Fiber laser source ,Max,Raycus or IPG
Handheld gun/Laser head	Made in China
Cooling chiller	Made in China
Welding software	Made in China

Machine pictures:



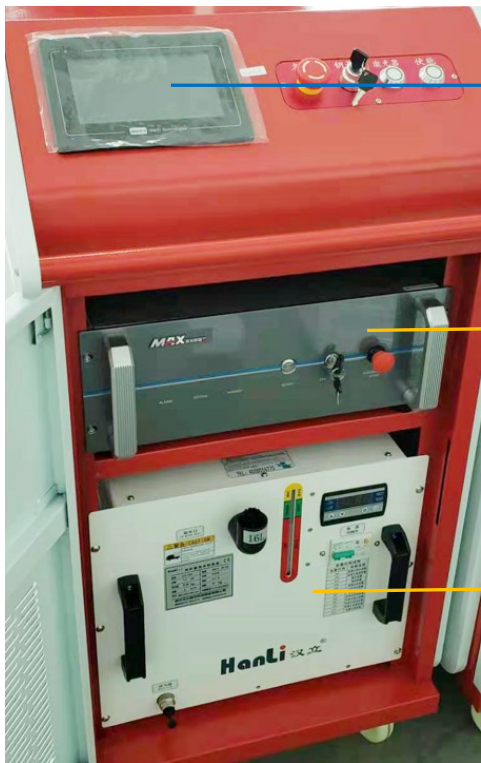
The whole machine



Wobble head



Wires feeding machine



Touch Screen

Fiber Laser Source

Water cooling chiller

1000w, 1500w Chiller install inside the machine cabinet.
2000~3000w, Chiller install outside the machine cabinet.

Machine size,weight:

L*W*H:1000*700*1100mm 210kg

Packing in wooden case:



Payment Terms:

30% Deposit with Order.

70% Balance payment before shipment.



Machine warranty time: One year time.

The Laser source (main part) warranty time:



After-sales service terms

1. One year warranty and lifetime maintenance;
2. Free training in our factory;
3. The first year, when machine failure is a quality problem ,free maintenance,free parts send to customers.
4. The service does not include human or environmental factors、 customer’s fault.

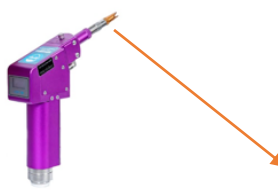


Delivery time: 8 working days after payment

Consumable parts:

1.  Deionized water. \implies [Fill in the water chiller](18L)

2.  Protective lens. [Install on welding head]
Per one piece lens price:6 USD

3.  Welding nozzles. [Install on welded joints]
Per one piece price:8 USD

Spare parts: (Delivery with per set machine)

1.	Protective lens	5 pcs
2.	Welding nozzles	5 pcs
3.	Protective glasses	2 pairs



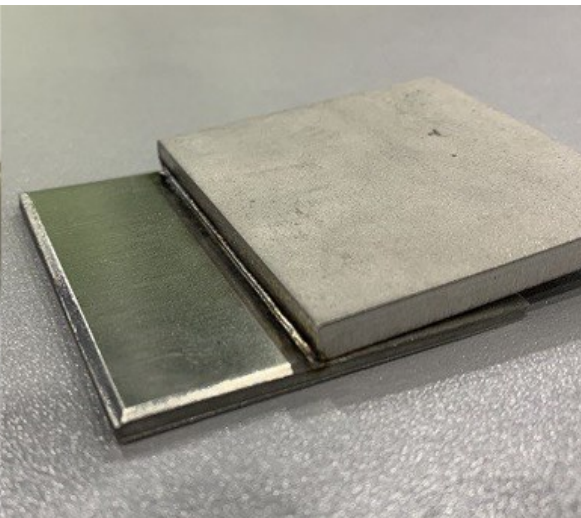
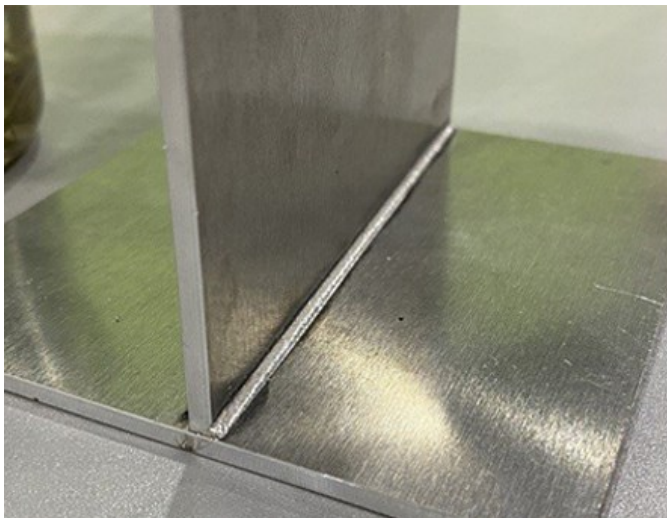
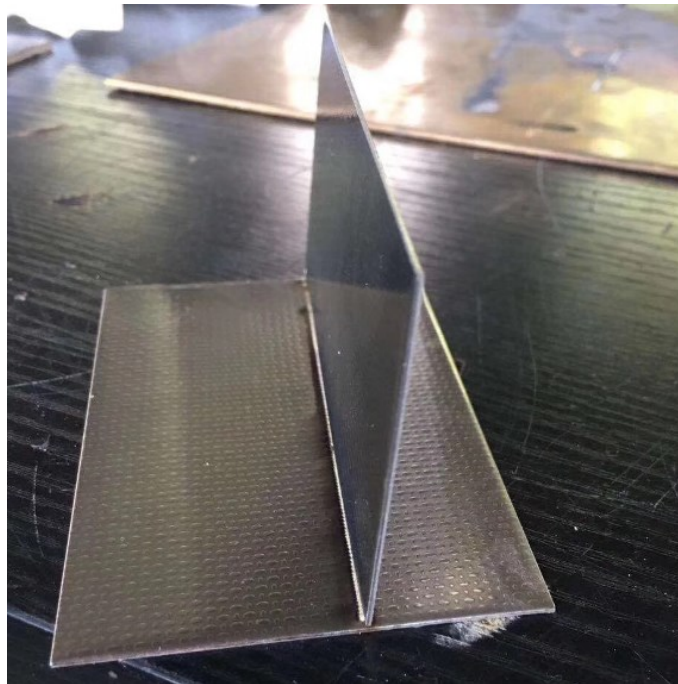
Video links: (Youtube)

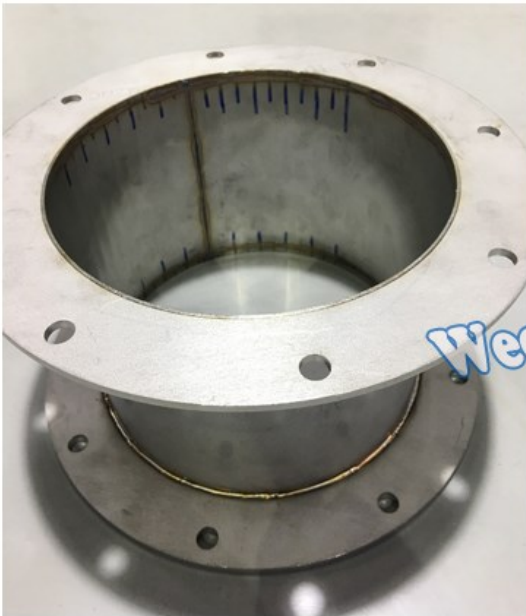
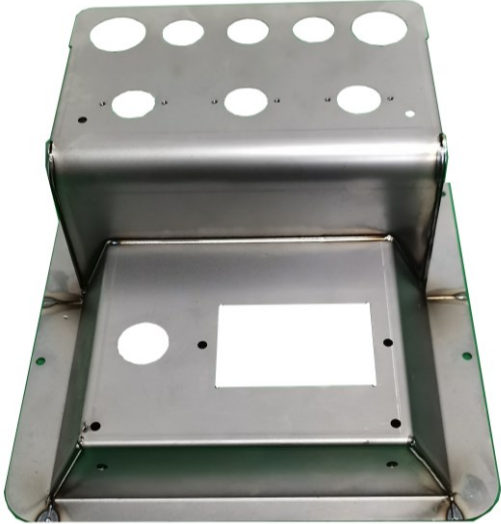
<https://youtu.be/g5LegDzicXk>

<https://youtu.be/-ApBUQIATL0>

<https://youtu.be/H5s8FCEWWKU>

Samples Showcase:





Wechat : milen77520

